

CPS 10559/1 - Map A

116°15'0"E

116°15'36"E

116°16'12"E

20°53'24"S

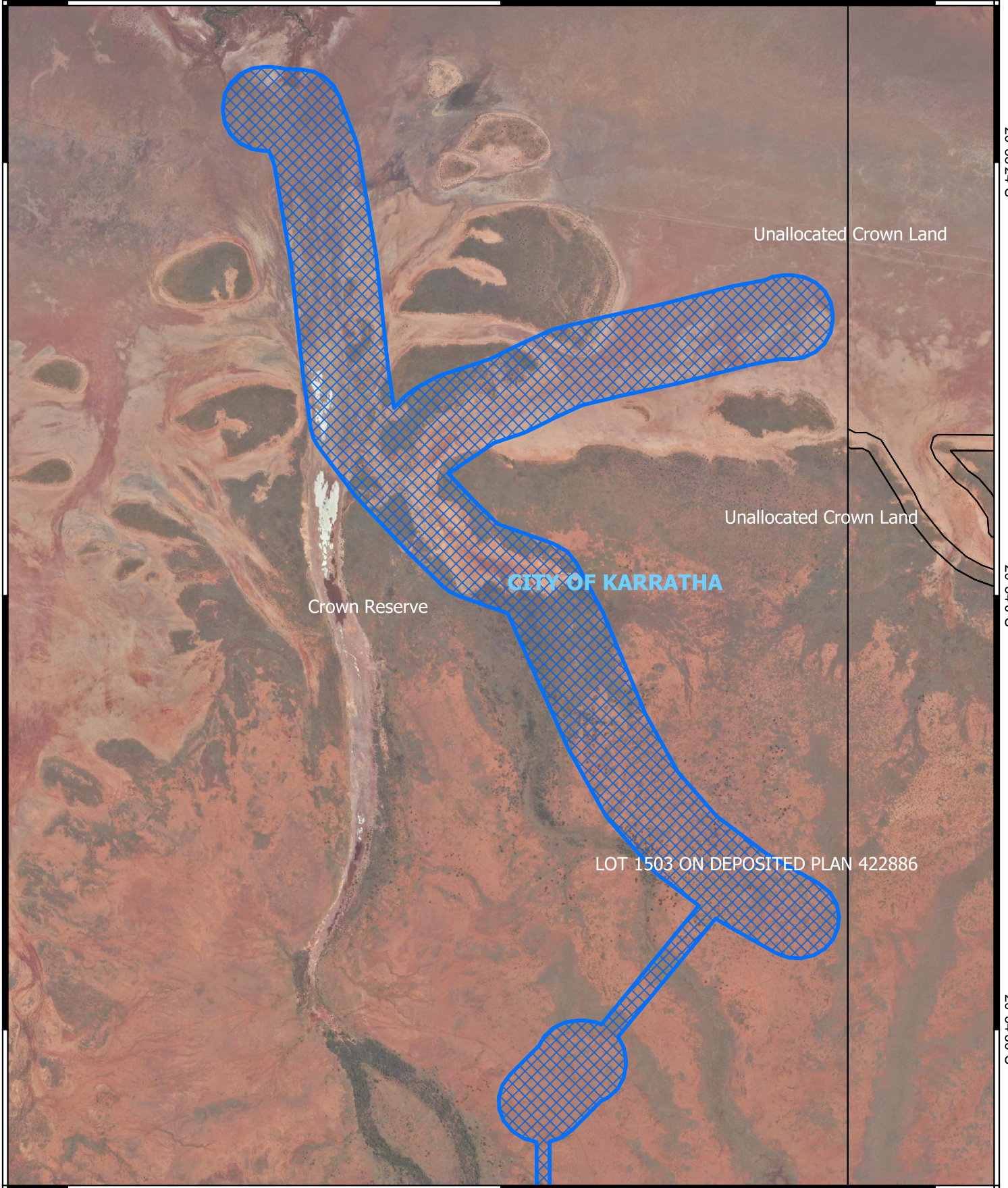
20°53'24"S

20°54'0"S

20°54'0"S

20°54'36"S

20°54'36"S


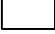



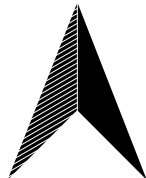
116°15'0"E

116°15'36"E

116°16'12"E

Legend

-  CPS areas applied to clear
-  Land Tenure (LGATE_226) - SLIP
-  Local Government Authorities



0 100 200 300 400 500 m



Projection: GDA 2020

1:10,000



GOVERNMENT OF
WESTERN AUSTRALIA